

# บุหลันชกมวยเตา

พระนิพนธ์ใน สมเด็จพระเจ้าฟ้าบรมพิตรสุภูมิพันธุ์

ส่วนขึ้น ท่อน ๑  
5



11



18



25



32



39



46



53



บุหลันชกมวยเตา  
Bass in C

60

Musical staff for measure 60, bass clef, key signature of two flats. The notation includes a whole rest, quarter notes, and a half note with a trill marking.

67

Musical staff for measure 67, bass clef, key signature of two flats. The notation consists of quarter and eighth notes.

72

Musical staff for measure 72, bass clef, key signature of two flats. The notation includes quarter, eighth, and sixteenth notes.

78

Musical staff for measure 78, bass clef, key signature of two flats. The notation consists of quarter and eighth notes.

83

Musical staff for measure 83, bass clef, key signature of two flats. The notation includes quarter and eighth notes.

88

Musical staff for measure 88, bass clef, key signature of two flats. The notation consists of quarter and eighth notes.

94

Musical staff for measure 94, bass clef, key signature of two flats. The notation includes quarter and eighth notes.

100

Musical staff for measure 100, bass clef, key signature of two flats. The notation includes quarter notes and rests.

106

Musical staff for measure 106, bass clef, key signature of two flats. The notation consists of quarter notes and rests.

ບຸລີລັດທວຍເຕາ  
Bass in C

ສຳນື່ນ ກ່ອນ 3



9



15



22



29



36



43



50



57



64



68



บุหลันชกมวยเตา  
Bass in C

ส่วนขึ้น 5



11



18



25



32



39



46



53



60



67



74



80



บุหลันชกมวยเตา  
Bass in C

ส่วนขึ้น ท่อน ๔

3



7



14



21



28



33

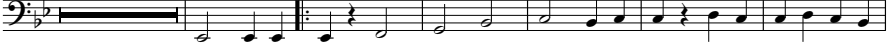


ส่วนขึ้น ท่อน ๑



6

4



16



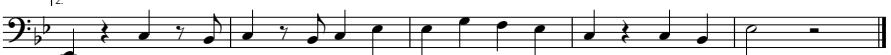
23



30



35



บุหลันชกมวยเตา  
Bass in C

สองชั้น ร้อย ๖



5



10



15



19



สองชั้น ร้อย ๓



7



14



20



26



31



ບຸລັນຜັກມວຍເຕາ  
Bass in C

ສ່ວນທີ ໔



7



13



18



ສິ້ນສຸດ ຕອນ ໑



6



11



15



ສິ້ນສຸດ ຕອນ ໒



6



10



ບຸກລັບສັກມວຍເຕາ  
Bass in C

ສິ້ນເຊີງ ຮິບອນ ໓



6



11



15



ສິ້ນເຊີງ ຮິບອນ ໔



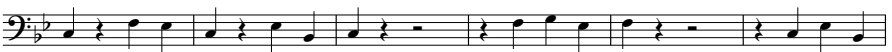
6



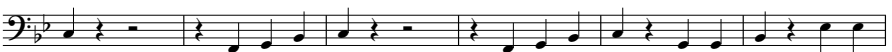
12



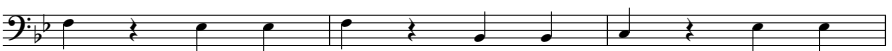
18



24



30



33

